

Tubs with or
without an air-source
heat pump.

Refresh in cool water

*Kirami Premium and
Comfort Cold Tubs*



HARVIA



Premium Nordlce S Dualex

Step out of the warmth of the sauna into a tub beside it, where the touch of cold water on your skin awakens every sense and helps you recover from a busy day. Alternatively, you can treat yourself to a wonderfully warm and relaxing bath. Either way is possible, as the Premium Nordlce S tub is equipped with the Dualex air-source heat pump, which cools the tub water and also includes a heating option. The water temperature range is 4-40 °C.

- Air-source heat pump for cooling or heating the water
- Includes filtration and ozone purification
- Plug-and-play installation
- Bench shaped from gray stone that remains firmly in place on the tub floor
- Insulated cover, optional accessory
- Deluxe or Family steps, optional accessory



Faux leather insulated cover, optional accessory



Stone bench included as standard



*The air heat pump cools
or heats the tub water*



Comfort BlackIce S

A dipping tub made from black plastic. The interior material is gray plastic with insulation all around the tub. The exterior is stylish black faux leather. ***Take a dip to refresh yourself and energize your body and mind!***

Comfort BlackIce S Dualex

The same tub, but with the Dualex air heat pump.

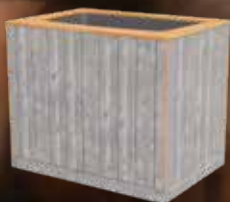
Technical specifications

Exterior color

TW Arctic Gray

Interior color

Gray



Exterior color

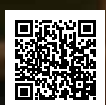
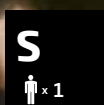
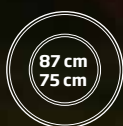
Black Leather

Interior color

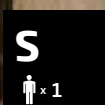
Gray



	PREMIUM NORDICICE S	COMFORT BLACKICE S
DEPTH	84 cm	84 cm
HEIGHT	105 cm	92 cm
BENCH	Gray stone, at one end of the tub	-
WATER DRAINAGE	¾-inch SK with a ball valve tap	¾-inch SK with a ball valve tap
OPTIONAL AIR-SOURCE HEAT PUMP	Dualex Cooling Unit and filter	Dualex Cooling Unit and filter
DELIVERY CONTENT	Delivered pre-assembled	Delivered pre-assembled
ACCESSORIES	Insulated cover and steps	Insulated cover and steps



PREMIUM NORDICICE S



COMFORT BLACKICE S



HARVIA

Kirami Oy

Villiläntie 2, 32730 Sastamala, Finland

Sales : +358 10 574 2172

info@kirami.fi

www.kirami.com